
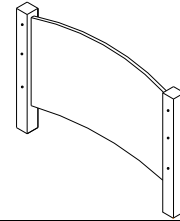


Please read & check through these instructions carefully before proceeding with assembly

COMPONENTS	
Box 1 of 4 End Panels	2 x End Panels with 8 Cams Inserted
Box 2 of 4 Bed Rails	2 x Side Rails (with Rib) 2 x Long Safety Rails 2 x Short Safety Rails 1 x Support Leg 1 x Fittings Pack (Bed Assembly)
Box 3 of 4 Bed Legs	2 x Right Handed Legs 2 x Left Handed Legs 1 x Fittings Pack (End Assembly)
Box 4 of 4 Bed Slats	1x Set of Slats
Tools Required (Not Supplied)	
	

1 - Ends Assembly

Ends Assembly Components:
Box 1 & Box 3
Fittings Pack (End Assembly)



(A) 8mm Dowel Qty = 12



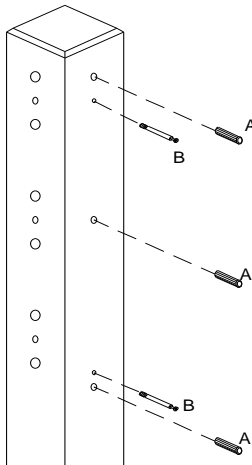
(B) Cam Pin Qty = 8



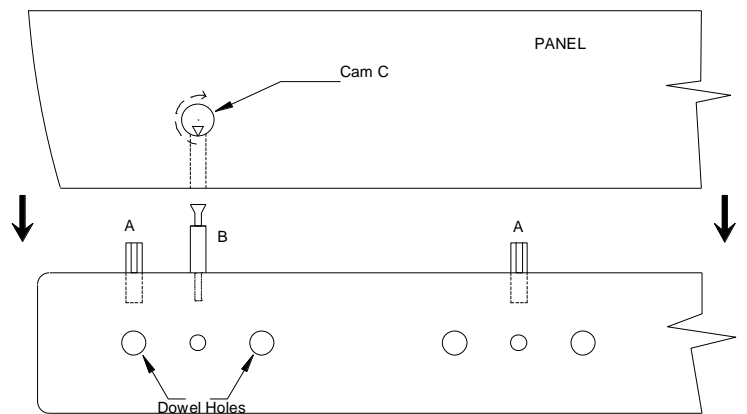
(C) Cam (Already In Panel) Qty = 8



1)



2)



1) Place legs on a flat surface taking care not to scratch. Insert 8mm dowels (A) into holes with light hammer.

Screw cam pins (B) carefully into 5mm holes, to top of the thread, using cross slot screwdriver.

Repeat process for the other three legs.

2) Ensure cams (C) are inserted in the panel with the arrow pointing to the edge. Carefully locate the panel onto the dowels and cam pins. When in place, turn the cam clockwise with cross-slot screwdriver to lock.

Ensure the legs are attached to the panel in pairs ie: dowel holes are facing the same way.

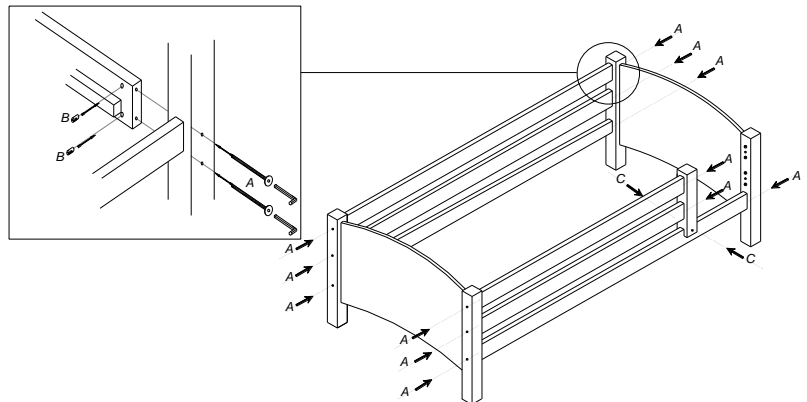
2 - Bed Assembly

Bed Assembly Components:

Assembled Ends (See Overleaf)

Box 2 & Box 4

Fittings Pack (Bed Assembly)



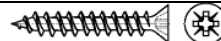
(A) 12 x M6 115mm Bolt



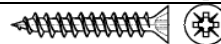
(B) 12 x M6 Barrel Nut



(C) 2 x 30mm Woodscrew



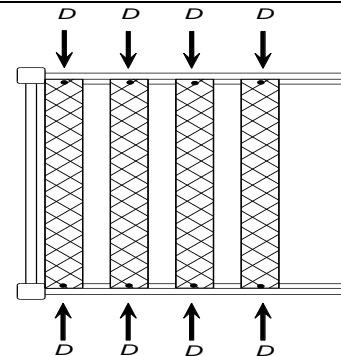
(D) 24 x 38mm Woodscrew



1 x Allen Key



1. Locate the 2 side rails into one pre-assembled bed end with mattress rail rib to the bottom.
2. Locate long rear safety rails into bed end. Please note the dowels may be a snug fit for stability.
Fix other bed end as above.
3. Secure rails & safetys with M6 bolt (A) through leg and into barrel nut (B). Use Allen Key provided to tighten.
4. Choose left or right hand opening (as shown), locate & secure front short safetys & support leg. Fix support leg to side rail using screws (C).
5. Secure mattress slats as described opposite.
6. We recommend that bolts are checked & tightened at regular intervals.



Mattress Slat Base

Spread the slats out across the ribs on the side rails ensuring the gap between each rail is greater than 60mm, but no more than 75mm (The webbing between the slats defines this dimension, when taugt). Fix the slats to the rib using screws (D).

This product is designed to conform to the latest safety regulations and we hope you will be happy with your purchase. This product is primarily produced from quality Scandinavian pine. As such you may find small knot or surface defects that are inherent with a natural resource and in no way compromise safety or functionality. Whilst every effort is made to ensure this product reaches you in good condition, in the unlikely event you find a problem with any component, **please do not attempt to assemble** – and contact your retailer. As you will appreciate, we cannot accept any liability for damage once an attempt to assemble had been made.